

Advantages



Intuitive workflow



Unlimited number of exports



Optimised algorithm: fastest calculation operations

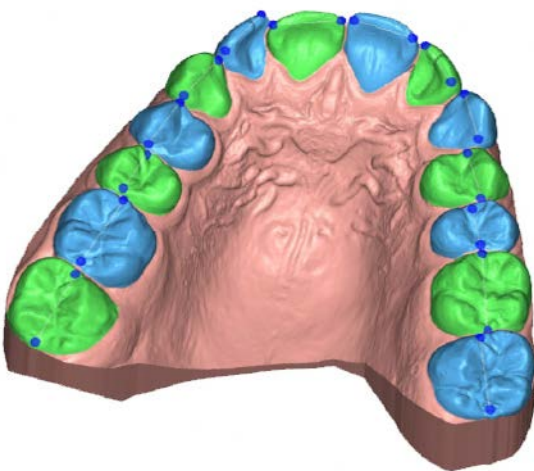


Virtual setup videos to increase treatment acceptance

Main functions

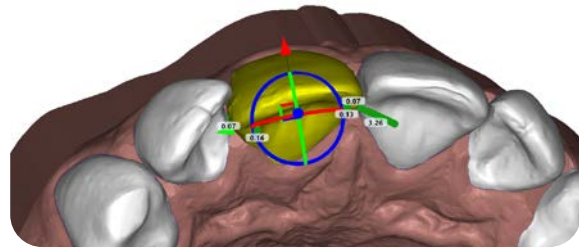
► Tooth recognition

Aligner provides accurate segmentation enabling distinction between each tooth and the gum with just a few clicks.



► Set up

Take control over teeth positioning and treatment plan to customise each case.



Clear aligners can be created either by the thermoforming technique or by direct 3D printing.



► Automatic trimming gateway

